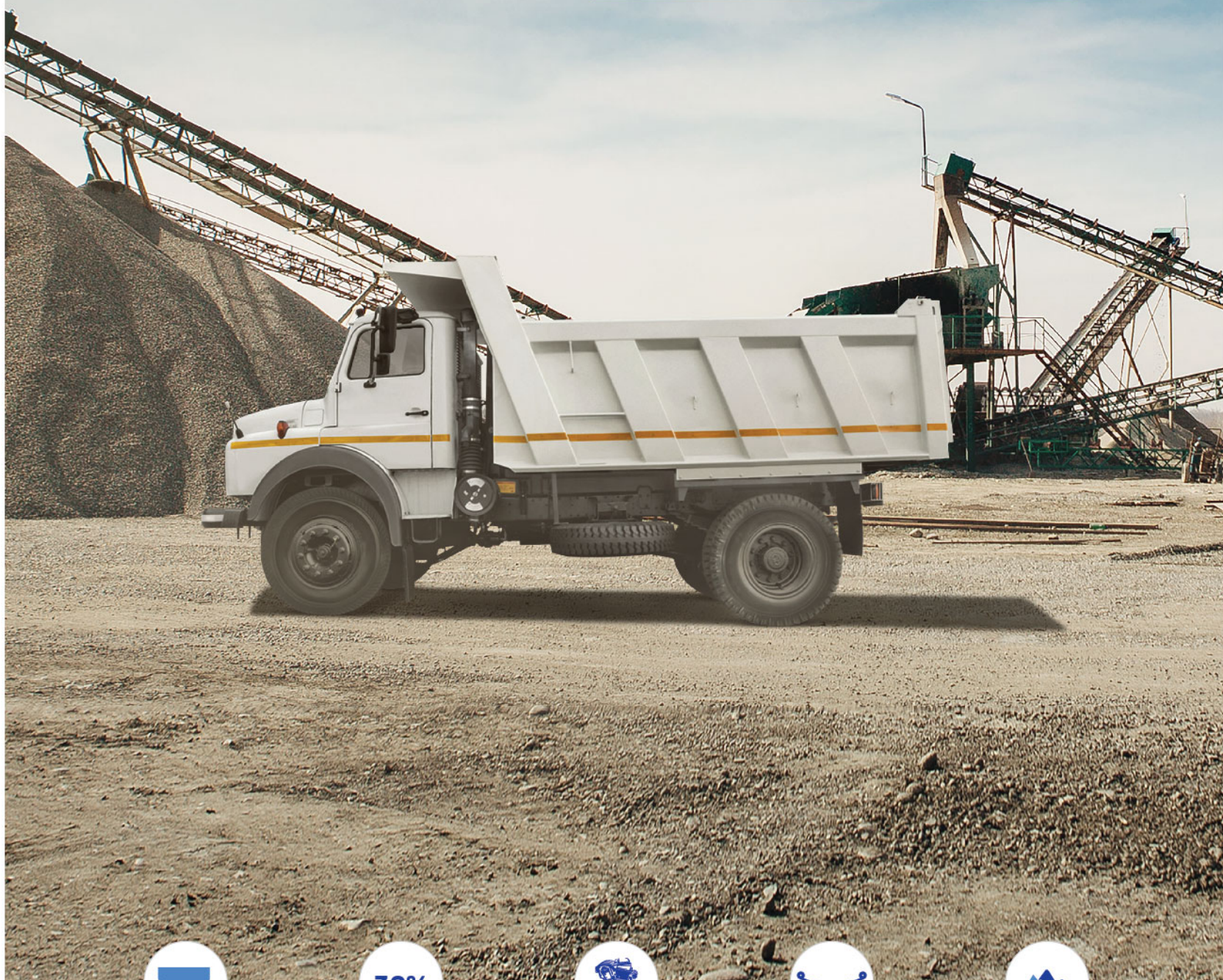


TATA SK 1613. UNLOAD WITH EASE. MAXIMIZE YOUR PROFITS.

NOW AVAILABLE WITH
TIPPER BODY OPTION



8 CBM Heavy Duty
Tipper Body with Twin Ram
Tipping Mechanism

30%

30% Extra
Pulling Power



Fuel Efficient
and Reliable
BSIII Cummins Engine



Heavy Duty
Gearbox
and Axle



Suitable
for All Terrains

TATA SK 1613 SPECIFICATIONS

DRIVE

4X2

EMISSION NORM

BSIII Compliant

ENGINE MAKE/MODEL

CUMMINS 6BTAA 5.9

ENGINE CC

5883 cc

MAX. HORSE POWER

136.1 HP @ 2500 rpm

TORQUE

490 Nm @ 1500 rpm

GEARBOX MAKE/MODEL

TATA G 600 6-Speed

NO. OF SPEED

6 Forward, 1 Reverse

FIRST GEAR RATIO

8.47

CLUTCH DIAMETER

352 mm Single Plate Dry Frictional Type

FRONT AXLE

Heavy Duty Forged I Beam Reverse Elliot Type

REAR AXLE

Fully Floating Axle RA109RX

REAR AXLE RATIO

5.86

FRONT SUSPENSION

Semi-elliptical Leaf Spring

REAR SUSPENSION

Semi-elliptical Leaf Spring

SHOCK ABSORBER

Hydraulic Double Acting Telescopic Type at Front Only

SERVICE BRAKE

Fully Duplicated Full Air S-cam Brake System

AUXILIARY BRAKING SYSTEM

Pneumatically Operated Interlinked with Service Brake

PARKING BRAKE

Graduated Valve Controlled Spring Brake Chamber
Integral with Rear Brake

TYRE SIZE

10.00 x 20-16 PR

GROUND CLEARANCE

Rear Axle - 239 mm
Front Axle - 302 mm

GRADEABILITY

26%

MAX. SPEED

78 kmph

FUEL TANK SIZE

160 Litres

BATTERY

2 x 12V=24V, 150 Ah

STEERING

Hydraulic Assisted Power Steering

CABIN TYPE

All Steel Semi-forward Control

WHEELBASE

3625 mm

VEHICLE OVERALL LENGTH WITHOUT BODY

6100 mm

VEHICLE OVERALL WIDTH

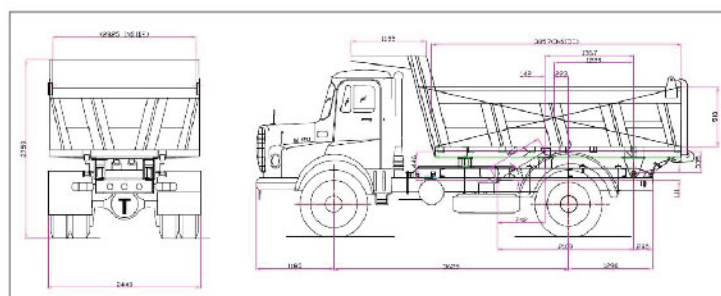
2434 mm

MINIMUM TURNING CIRCLE DIA.

16200 mm

BODY SIZE

8 Cubic Meter



- 1) Body Dimension: L-3857 mm x W-2325 mm x H-910 mm
- 2) Cubic Capacity: 8 CUB. MTR
- 3) Tipping Angle: $42 \pm 1^\circ$
- 4) Floor 5 mm as Per IS: 2062 FE 410-WB
- 5) Side Panel 3.15 mm as Per IS 1029